



# About us

## Global Energy Services Alliance (*GESA*)



GESA is a joint venture between two companies, **Baseload** and **Pro-Per**, with the aim of providing the Energy and Power Generation sectors a one-stop-shop for all their service needs.

We provide services around the globe with our extensive expertise on **gas, thermal and hydro powerplants**; world class competencies in gas, steam, hydro turbines, high-level maintenance and repair capabilities in generators.



# Global Energy Services Alliance (GESA)

*Manpower, Outreach, and Facilities*



**40+**

**Countries Served**



**8**

**Regional Offices**



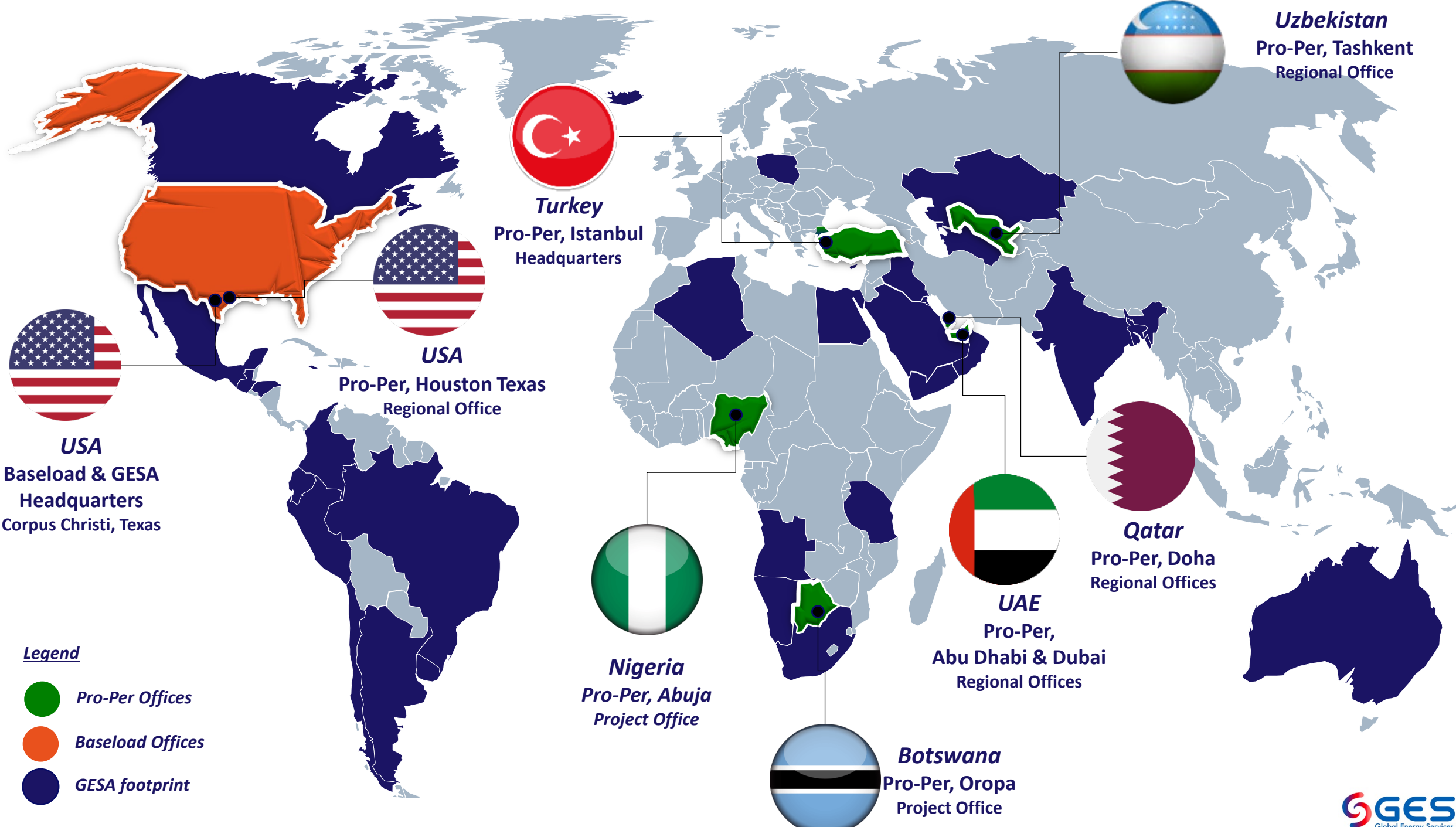
**2**

**Service Workshops**



**600+**

**Experts & Professionals**



**USA**  
 Baseload & GESA  
 Headquarters  
 Corpus Christi, Texas

**USA**  
 Pro-Per, Houston Texas  
 Regional Office

**Turkey**  
 Pro-Per, Istanbul  
 Headquarters

**Uzbekistan**  
 Pro-Per, Tashkent  
 Regional Office

**Nigeria**  
 Pro-Per, Abuja  
 Project Office

**UAE**  
 Pro-Per,  
 Abu Dhabi & Dubai  
 Regional Offices

**Qatar**  
 Pro-Per, Doha  
 Regional Offices

**Botswana**  
 Pro-Per, Oropa  
 Project Office

- Legend**
- Pro-Per Offices
  - Baseload Offices
  - GESA footprint

# Health, Safety, Environment Policy

GESA is committed to achieving environmental excellence and protecting the health and safety of our employees wherever we operate.

This means complying with all applicable environmental, health and safety laws, as well as continuing to assess the impact of our operations on the communities where we do business and the potential risks to our customers of the products and services we provide.

## Occupational Accident and Near-Miss Notification Statistics

	2018	2019	2020	2021	2022
Number of Employees	215	365	350	216	319
Working Hours	307.327,5	323.747,5	214.977,50	281.116,50	374.918,00
Lost Working Day	16	58	0,5	0	0
Near-Miss	78	54	7	3	5



# Certification

## ISO 9001:2015

### Quality management systems

# Certificate

Standard **ISO 9001:2015**  
 Certificate Registr. No. **01 100 103964**

Certificate Holder:   
**PROFESYONEL PERSONEL HİZMETLERİ TİC.A.Ş.**  
 Gayrettepe Mh. Yıldız Posta Cad.  
 D Plaza No:52 Kat:7 Daire:49  
 34349-Beşiktaş / İstanbul  
 Türkiye

Scope: Installation, commissioning & start-up, operation, maintenance activities and technical personnel supply for power plants

Validity: Proof has been furnished by means of an audit that the requirements of ISO 9001:2015 are met.  
 The certificate is valid from 2022-07-07 until 2025-07-06.  
 First certification 2010

2023-07-03   
 TÜV Rheinland Cert GmbH  
 Am Grauen Stein · 51105 Köln

## ISO 45001:2018

### Occupational health and safety management systems

# Certificate

Standard **ISO 45001:2018**  
 Certificate Registr. No. **01 213 2315866**

Certificate Holder:   
**PROFESYONEL PERSONEL HİZMETLERİ TİC.A.Ş.**  
 Gayrettepe Mh. Yıldız Posta Cad.  
 D Plaza No:52 Kat:7 Daire:49  
 34349-Beşiktaş / İstanbul  
 Türkiye

Scope: Installation, commissioning & start-up, operation, maintenance activities and technical personnel supply for power plants

Validity: Proof has been furnished by means of an audit that the requirements of ISO 45001:2018 are met.  
 The certificate is valid from 2023-08-29 until 2026-08-28.  
 First certification 2014

2023-07-03   
 TÜV Rheinland Cert GmbH  
 Am Grauen Stein · 51105 Köln

## ISO 9001:2015

### Quality management systems

Certificate Number  
**8418**

Date First Registered  
**23 February 2022**

Date Certificate Issued  
**23 February 2022**

Date Certificate Expires  
**23 February 2025**

World Certification Services Ltd.  
Barton Court, Shepperton, Middx.  
Uxbridge, England, UB8 3JL  
United Kingdom

## CERTIFICATE OF REGISTRATION

*This Certificate has been awarded to:*

**Baseload Power Generation Parts and Services, LLC.**

**3609 County Rd 55A  
Corpus Christi, TX 78406  
USA**

*In Recognition of the Organization's Management System which complies with:*

### ISO 9001:2015

*For the Scope of Activities described below:*

**Maintenance Inspections and Emergency Outage Repair Services for 100MW and Smaller Power Generators. Field Services and Parts.**

*This Certificate has been awarded by:*

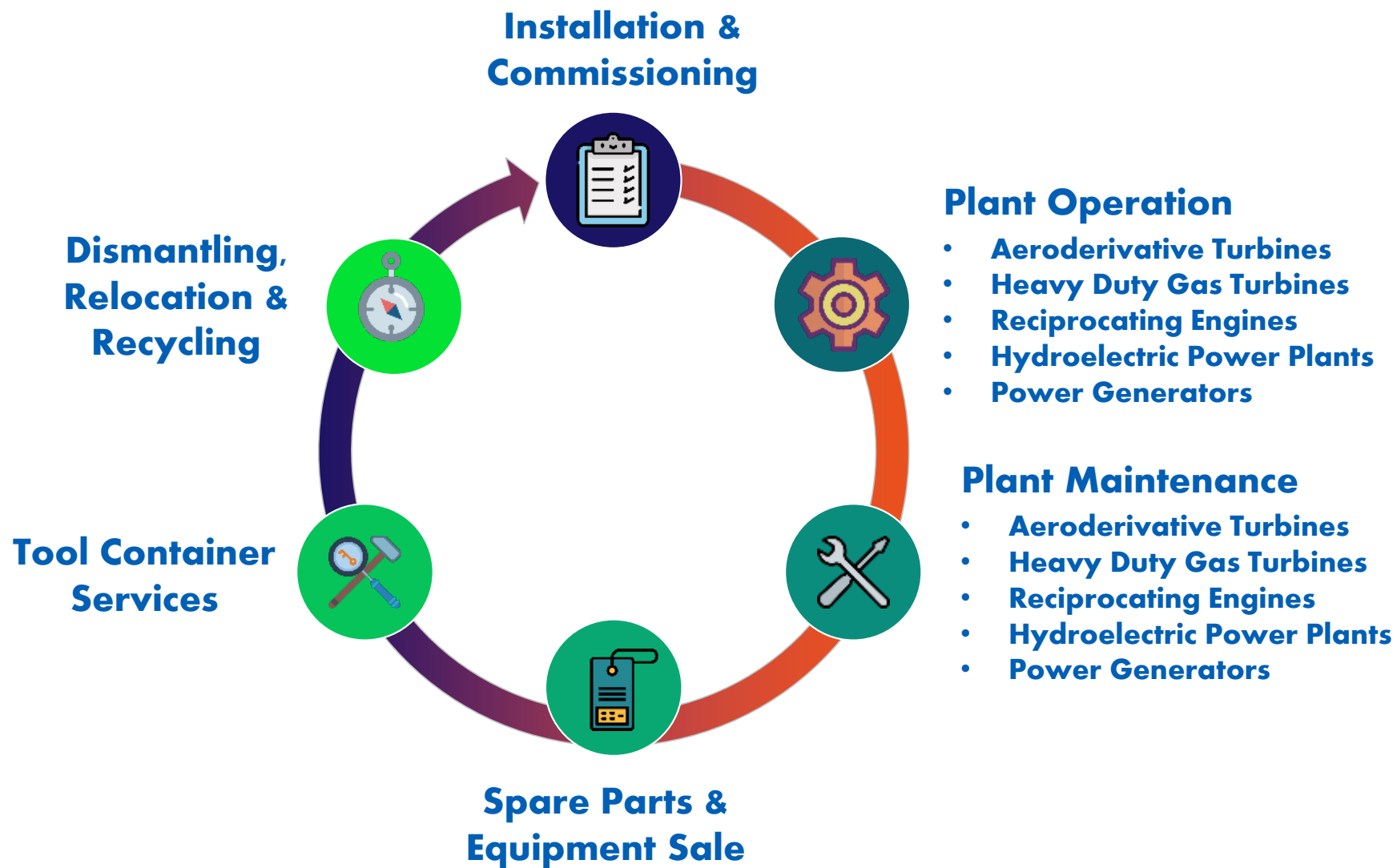
**WORLD CERTIFICATION SERVICES LTD.**

Issued By:   
Operations Director

Revision Date:  
Amended **23 February 2023**

The use of the accreditation mark indicates accreditation in respect of those activities covered by UKAS accreditation certificate number 04 and / or IAF accreditation certificate number 95-0343.

# Our Core Services



# Installation & Commissioning

## Mechanical Installation

- Gas Turbines
- GT Generators
- GT Auxiliary Systems
- Compressors
- Steam Turbines
- ST Generators
- Combined Cycle Auxiliary Systems

## Electrical Installation

- Grounding
- Scada & Control Systems
- Cubicle & Panel Installation
- Cable Trays
- Cabling (MV, LV and Signal)
- Interior and Exterior Lighting
- Fire Detection
- Fiber Optic

## Commissioning

- Flushing
- Point to Point Checks
- Field Functionality Tests
- Calibration
- Hot & Cold Commissioning
- Start Up and First Fire
- Performance Test
- Reliability Test
- Acceptance Test
- Resident Onsite Support
- Warranty Engineering

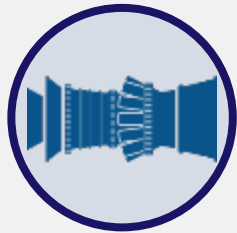


# Operations & Maintenance

**Aeroderivative  
Gas Turbines**



**Heavy Duty  
Gas Turbines**



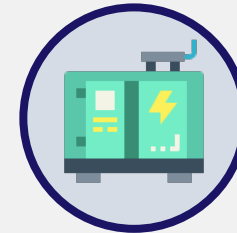
**Steam Turbines**



**Hydroelectric  
Power Plants**



**Power  
Generators**



*Click on icons for more details ...*

# Aeroderivative Gas Turbines

## Operations & Maintenance

# Aeroderivative Gas Turbines

## Our Services

**Plant Operation**

**Borescope Inspection  
(BSI)**

**Troubleshooting**

**Turbine Removal**

**Top case**

**Semi Annual / Annual  
Inspection**

**Turbine Installation**

**Hot Section  
Exchange(HSE)**

**Tool Container Rental**

**Turbine Exchange**

**Rehabilitation**

**Alignment**

**Bushing Replacement**

**Installation & Startup**

**Combustor Exchange**

# Aeroderivative Gas Turbines

## Supported Turbines



- LM2500/+/G4
- TM2500
- LM6000
- LMS100



- SGT-A35
- SGT-A05



- FT4
- FT8



- RB211
- Trent 60

**Solar Turbines**

*A Caterpillar Company*

- Mars
- Titan
- Taurus
- Centaur

# Heavy Duty Gas Turbines

## Operations & Maintenance

# Heavy Duty Gas Turbines

## Our Services

**Plant Operation**

**Alignment**

**Troubleshooting**

**Turbine Assembly**

**Borescope Inspection**

**NDT**

**Turbine Disassembly**

**Hot Gas Path  
Inspection**

**Rehabilitation**

**Turbine Replacement**

**Combustion Chamber  
Inspection**

**Assembly & Startup**

**Test & Calibration**

**Combustion Chamber  
Replacement**

**Periodical Minor and  
Major Maintenance**

**Turbine Dry Ice and  
Sandblasting**

**Spare Parts Supply**

**Tool Container Rental**

# Heavy Duty Gas Turbines

## Supported Turbines



General  
Electric

### Frame Series

- 9HA, 9F, 9E
- 7HA, 7F, 7E
- 6F, 6B
- GT13E2

**SIEMENS**  
ENERGY

### SGT Series

- SGT5-9000HL/8000H
- SGT5-4000/2000E
- SGT6-9000HL/8000H
- SGT6-5000F/2000E

**ANSALDO**  
**ENERGIA**

### GT & AE Series

- GT36-S5, GT36-S6
- GT26
- AE94.3A, AE94.2
- AE64.3A



### MGT & THM Series

- MGT6000-2S
- MGT6000-1S
- THM1304

# Steam Turbines

## Operations & Maintenance



# Steam Turbines

## Our Services

**Installation**

**Commissioning**

**Plant Operation**

**Minor Maintenance**

**Major Maintenance**

**Unplanned  
Maintenance**

**Dismantling**

**Relocation**

**Troubleshooting**

**Rotor Overhaul**

**Turbine Overhaul**

**Control System  
Upgrade**

**Turbine Efficiency  
Evaluation**

**Turbine Spare  
Part Supply**

# Steam Turbines

## Supported Turbines



**General  
Electric**

**SIEMENS**  
ENERGY



**Doosan Škoda Power**



**Harbin  
Turbine**

**Triveni**  
TURBINES

**HCTC**

# Hydroelectric Power Plants

## Operations & Maintenance

# Hydroelectric Power Plants

## Installation & Commissioning

- # of Projects: 27 plants/59 units
- Installed capacity: 228MWs

## O&M References

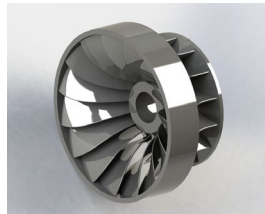
- # of Projects: 9 plants/21 units
- Installed capacity: 57.71MW
- Production: ~200 million kWh/year



Pelton



Kaplan



Francis

Turbine manufacturers we have worked with:



ALSTOM

HYDROTU

bfl

VOITH





# Solar Power Plants

## Design with Installation & Commissioning

### References

- # of Projects: 19 plants
- Installed capacity: 32MW
- Production: ~33 million kWh/year
- 4.5MW of Hybrid (Solar & Hydro)



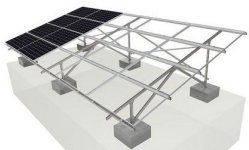
**Panel**



**Inverter**



**Substation**



**Steel  
Construction**



# Power Generators

## Operations & Maintenance

# Power Generators

## Our Services

1. **Rotor Out**
2. **Field:**
  - Rings Off Inspection,
  - Rewind and,
  - Repair
3. **Stator:**
  - Wedge Tightness test & replace,
  - Hi Pot and El-Cid Test,
  - Rewinds & Repair
4. **Retaining Ring Removal & Reassembly:**
  - Induction Heating
5. **Removing & Cleaning Coils**





# Power Generators

## Supported Generators



**BRUSH**



**MEIDEN**



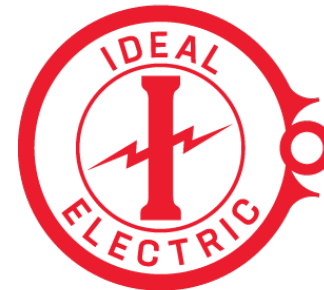
**jeumont  
electric**  
groupe  
altawest



**MITSUBISHI  
ELECTRIC**



**Hitachi Energy**



**EMPOWER** One-Stop-Shop for Power  
**GENERATORS**



# Power Generators

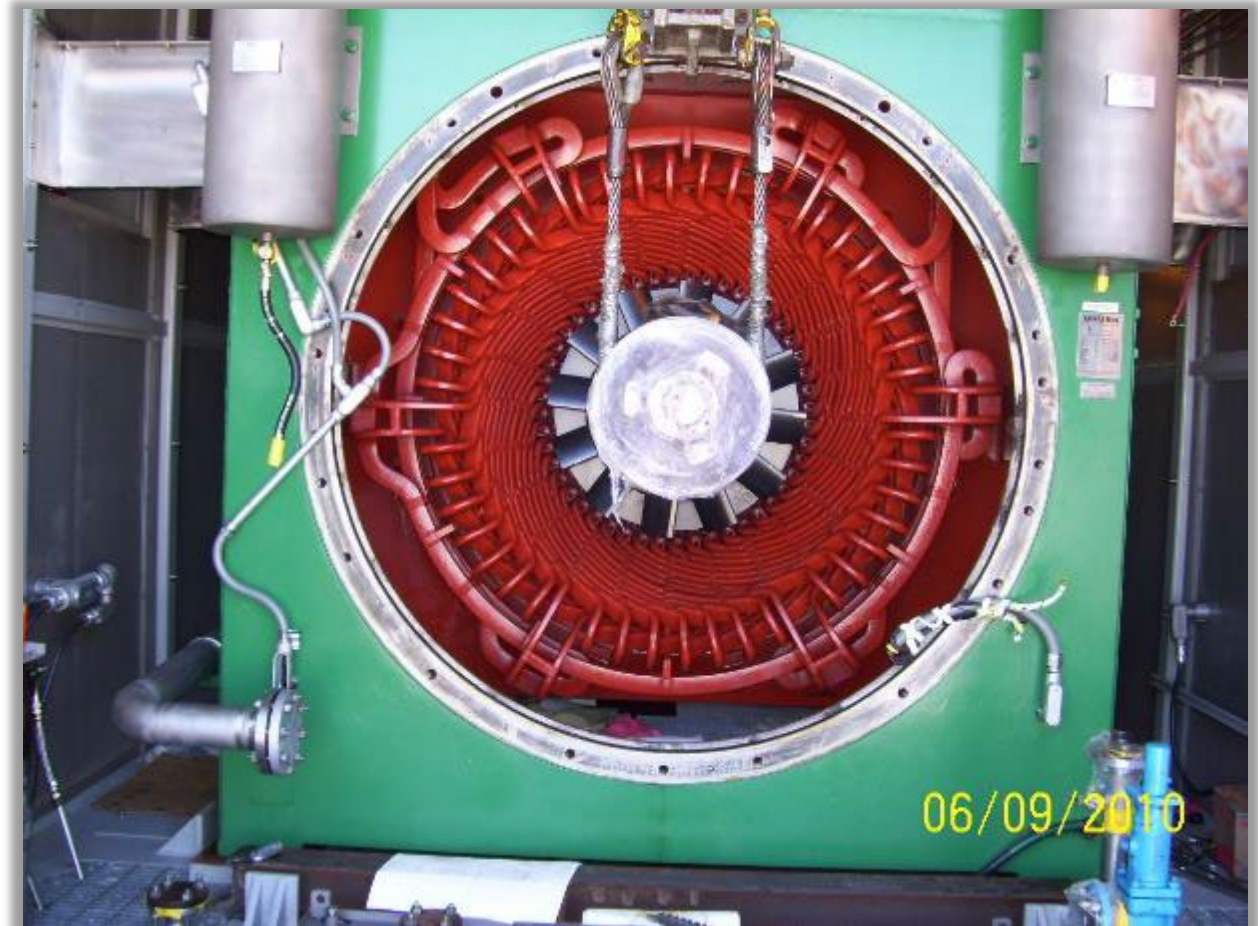
## Automatic Voltage Regulators

### Automatic Voltage Regulators:

1. GE (EX2100, EX2100e)
2. BRUSH (A30, A32)
3. Others...

### AVR Services:

1. Inspection
2. Calibration
3. Programming
4. Card Repair



# Spare Parts & Equipment supply

GESA provides spare **equipment**, **spare parts**, and all necessary **consumables** required in your power plant.

With our extensive network of vendors, we supply both **OEM and non-OEM** parts as well as refurbished parts as required.



# Tooling Capabilities

- Gas Turbine Package installation, removing and re-location
  - Gas Turbine Commissioning Activities
- Gas Turbine L1/L2 Maintenance (HPC, Hot Section, Combustor )
- Gas Turbine Exchange (Lift Fixtures, Maintenance Dollies)
  - Gas Turbine Alignment
  - Gas Turbine Borescope Inspection
  - Gas Turbine Instrument calibration
  - LM Series Gas Turbine Oil flushing
- LM Series Gas Turbine Emission Measurement and performance Control
- LM Series Gas Turbine Generator Protection Relay Control

## Heavy Duty Turbines

- Major Overhaul
- Hot Gas Path Inspection
- Auxiliary System Maintenance
- Borescope Inspection
- Bucket Inspection and Replacement
- Instrument Calibration
- Nozzle Replacement
- Tooling Containers

## Aeroderivative Turbines

- Installation, removing and re-location
- Commissioning
- Major Overhaul
- Minor Inspection
- Auxiliary System Maintenance
- Borescope Inspection
- Bucket Inspection and Replacement
- Instrument Calibration
- Control Valve Maintenance

## Steam Turbines



# Dismantling, Relocation & Recycling

Assessment of Decommissioned Power Plants

Dismantling the Power Plant Equipment

Selling Equipment and Spare Parts

Recycling the Rest of the Equipment



# Project References

# Project References – Installation & Commissioning



**Mexicali, Baja California, Mexico**

**Owner:** Prodemex  
**Service Type:** Installation & Commissioning  
**Project Scope:** Mechanical & Electrical Installation & Commissioning Works of Power Plant  
**Capacity:** 135MW  
**Equipment:** 3 x TM2500 Gen4  
 2 x TM2500 Gen6  
**Project Date:** 2022



**Tecate, Baja California, Mexico**

**Owner:** Saavi Energia  
**Service Type:** Installation & Commissioning  
**Project Scope:** Mechanical & Electrical Installation & Commissioning Works of Power Plant  
**Capacity:** 105MW  
**Equipment:** 3 x TM2500 Gen8  
**Project Date:** 2022



**Silivri, Istanbul, Turkiye**

**Owner:** Botaş  
**Service Type:** Installation & Commissioning  
**Project Scope:** Mechanical & Electrical Installation & Commissioning Works of Compressor Island of Kuzey Marmara Natural Gas Storage Extension Project  
**Capacity:** 4.6 billion Sm3  
**Equipment:** 5 x Siemens SGT-400  
**Project Date:** 2022 (ongoing)



# Project References – Installation & Commissioning



## AKÇA HEPP

<b>Owner:</b>	HydroTU
<b>Service Type:</b>	Installation & Commissioning
<b>Project Scope:</b>	Mechanical supervision, installation and commissioning
<b>Capacity:</b>	6,3 MW
<b>Equipment:</b>	Horizontal Francis
<b>Project Date:</b>	2021



## Turkiye to Uzbekistan

<b>Owner:</b>	Aksa Energy
<b>Service Type:</b>	Relocation
<b>Project Scope:</b>	Relocation of Aksa Antalya power plant to Tashkent Uzbekistan
<b>Capacity:</b>	240 MW
<b>Equipment:</b>	3 x LM6000 PC 1 x LM6000 PD 2 x 8-11 MC 9
<b>Project Date:</b>	2020 - 2021



## Aba, Abia State Nigeria

<b>Owner:</b>	KS Energy / Geometric Power
<b>Service Type:</b>	Re-commissioning / Rehabilitation
<b>Project Scope:</b>	Re-commissioning / Rehabilitation of Power Plant
<b>Equipment:</b>	3 x LM6000 PD
<b>Project Date:</b>	2022 - Ongoing

# KS Energy Power Africa

## Power Plant Operation & Maintenance



### BUA/OBU (Nigeria) power plant

Generated power in 2021; **254.262** MWh

Generated power in 2022; **134.915** MWh

Total generated MW since COD; **1 634 078** MWh

---

### Orapa Power Plant

Generated power in 2021; **63.188** MWh

Generated power in 2022; **3.336** MWh

Total generated MW since COD; **362 563** MWh

---

### Bua Sokoto Cement

Generated power in 2021; **10.212** MWh

Generated power in 2022; **107.987** MWh

Total generated MW since COD; **118 199** MWh



# Project References – Aeroderivative Turbines



## Qatar – Baker Hughes

**Owner:** Qatar Gas

**Service Type:** Maintenance

**Project Scope:** Hot Section Exchange

**Capacity:** 50 MW

**Equipment:** 2 x LM2500

**Project Date:** 2021 (Completed)

## Oman – Baker Hughes

**Owner:** BP Khazzan

**Service Type:** Maintenance

**Project Scope:** Engine Exchange (removing and installing the gas turbine in an enclosure) of a LM2500 Gas Turbine.

**Capacity:** 25 MW

**Equipment:** LM2500

**Project Date:** 2021 (Completed)

## Umlulu – Baker Hughes

**Owner:** Umlulu

**Service Type:** Operation and Maintenance Support

**Project Scope:** O&M

**Capacity:** 140 MW

**Equipment:** 4 x LM2500

**Project Date:** 2021 (Completed)

# Project References – Aeroderivative Turbines



## Turkiye – Baker Hughes

**Owner:** Tanap  
**Service Type:** Maintenance  
**Project Scope:** Residence Engineering  
**Capacity:** 21 MW  
**Equipment:** LM2500  
**Project Date:** 2022 (Completed)



## Dubai, UAE – Baker Hughes

**Owner:** DUGAS  
**Service Type:** Maintenance  
**Project Scope:** Borescope Inspection  
**Capacity:** 21 MW  
**Equipment:** LM2500  
**Project Date:** 2022 (Completed)



## Abu Dhabi, UAE – Baker Hughes

**Owner:** ZADCO  
**Service Type:** Maintenance  
**Project Scope:** Engine exchange  
**Capacity:** 50 MW  
**Equipment:** LM6000  
**Project Date:** 2022 (Completed)



# Project References – Heavy Duty Turbines



## Tupras - Baker Hughes

**Owner:** Tupras  
**Service Type:** Maintenance  
**Project Scope:** Provide manpower and tool container support for major inspection of GE Frame 6B Frame turbines  
**Capacity:** 40 MW  
**Equipment:** GE Frame 6B  
**Project Date:** 2021 (Completed)



## Baymina Energy

**Owner:** Palmet Energy  
**Service Type:** TFA Support  
**Project Scope:** GE Frame 9FA Unit Hot Gas Path Upgrade Inspection Services including tool container provision.  
**Capacity:** 250 MW  
**Equipment:** GE Frame 9FA  
**Project Date:** 2022



## Angola - Chromalloy

**Owner:** Chromalloy  
**Service Type:** Manpower and Tooling Support  
**Project Scope:** Borescope Inspection of GE Frame 6B Heavy Duty Gas Turbine  
**Capacity:** 40 MW  
**Equipment:** GE Frame 6B  
**Project Date:** 2021 (Completed)

# Project References – Hydroelectric Turbines



## Karasu HEPPs

**Service Type:** Operation & Maintenance

**Capacity:** 2 x 2,05 MW  
2 x 1,60 MW  
3 x 3,64 MW  
2 x 2,43 MW  
2 x 2,25 MW

**Equipment:** Horizontal Francis,  
Vertical Kaplan,  
Vertical Francis

**Project Date:** Since 2020

## Defne HEPP

**Service Type:** Operation & Maintenance

**Capacity:** 3 x 2,41 MW

**Equipment:** Horizontal Francis

**Project Date:** Since 2010

## Pirinçli HEPP

**Service Type:** Operation & Maintenance

**Capacity:** 2 x 9,3 MW

**Equipment:** Vertical Kaplan

**Project Date:** Since 2020

## Celtikdere & Cevizlidere HEPP

**Service Type:** Operation & Maintenance

**Capacity:** 2 x 1,15 MW  
3 x 1,10 MW

**Equipment:** Horizontal Francis

**Project Date:** Since 2013

# Project References – Steam Turbines



## ENERJISA

<b>Owner:</b>	ENERJISA
<b>Service Type:</b>	Maintenance
<b>Project Scope:</b>	Major Maintenance
<b>Capacity:</b>	156 MW
<b>Equipment:</b>	Siemens SST-900 with HP50 Barrel type
<b>Project Date:</b>	2022 (Completed)



## AB Holding

<b>Owner:</b>	AB Holding
<b>Service Type:</b>	Maintenance
<b>Project Scope:</b>	Major Maintenance
<b>Capacity:</b>	165 MW
<b>Equipment:</b>	Doosan SKODA
<b>Project Date:</b>	2022

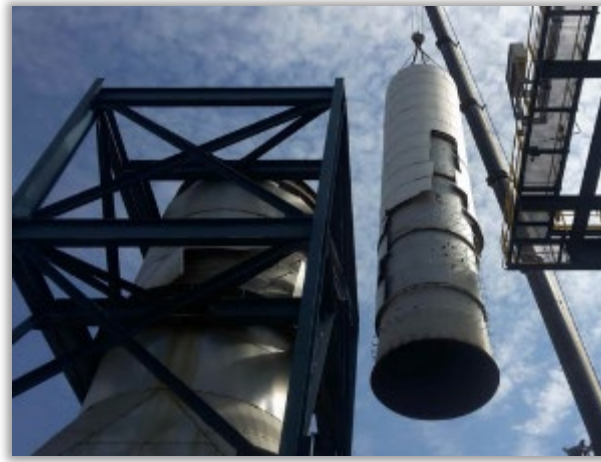


# Project References – Dismantling



**Turkiye, Antalya – AKSA**

**Scope:** Dismantling  
**Equipment:** Combined Cycle Power Plant (CCPP)  
**Project Date:** 2020



**Turkiye, Bursa – ENTEK Energy**

**Scope:** Dismantling & Recycling  
**Equipment:** GE LM2500+  
**Project Date:** 2018 – 2019



**Turkiye, Ankara – Ayen Ostim**

**Scope:** Dismantling & Recycling  
**Equipment:** GE LM2500+  
**Project Date:** 2018



***3609 County Road 55A  
Corpus Christi ,Texas 78406  
United States of America***

***Pro-Per HQ  
Istanbul, Turkey***



***Baseload HQ  
Texas, USA***

